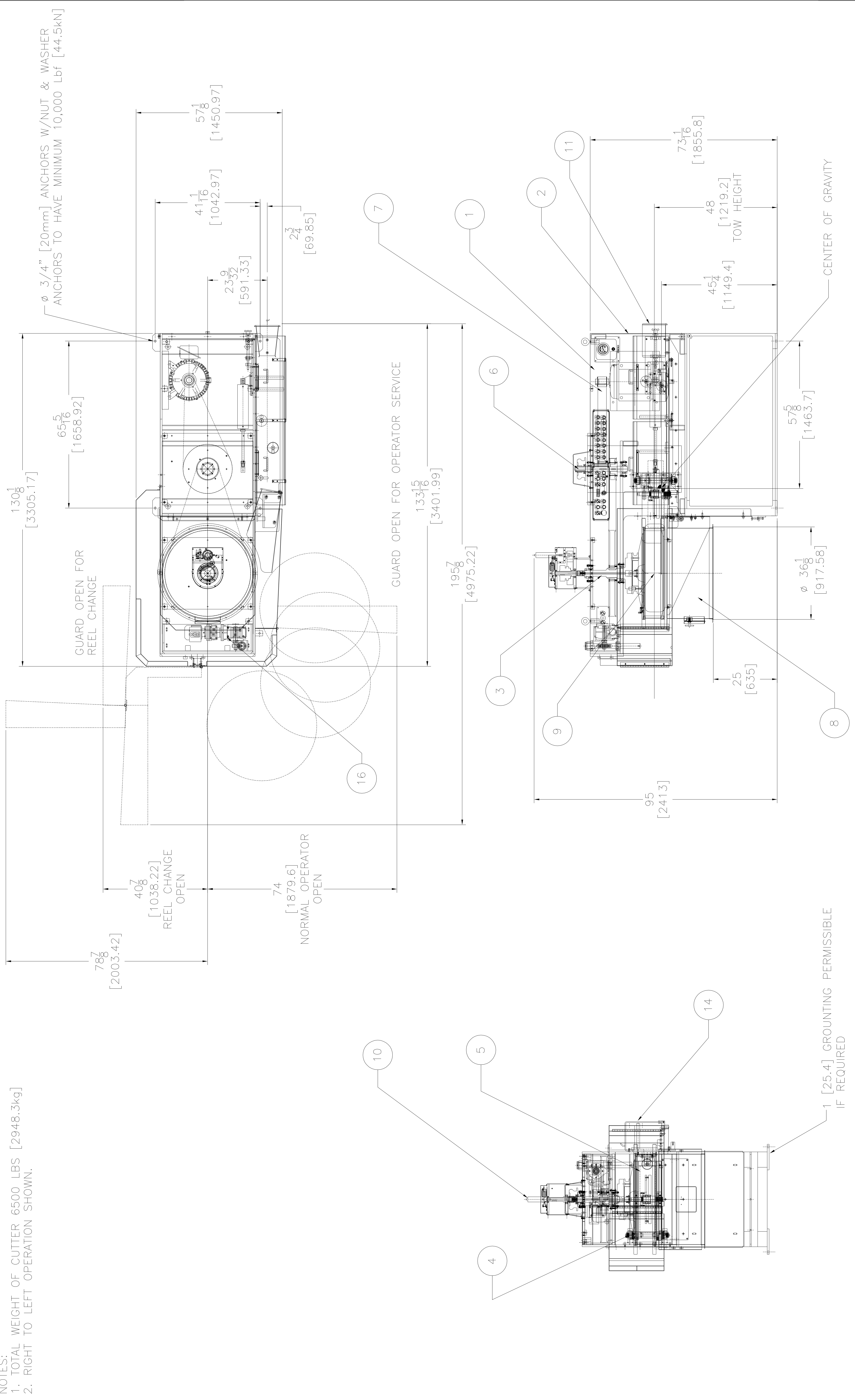


NOTES:  
 1. TOTAL WEIGHT OF CUTTER 6500 LBS [2948.3kg]  
 2. RIGHT TO LEFT OPERATION SHOWN.



REV.	DESCRIPTION	ENG.	DATE	APP.	DATE	REV.	DESCRIPTION
1							

7	8	9	10	11	12	13	14	15	16
DRN:	CHK:	DATE:	SCALE:	MATERIAL:	PLATING:	HEAT TREAT:	REVISION LEVEL:	DATE:	SCALE:
MRC	VDD	11/19/04	1:16	—	—	—	120	11/19/04	1:16
ALL CONTENTS ARE PROPERTY OF DM&E CORP. AND NOT BE REPRODUCED OR TRANSMITTED IN ANY FORM OR BY ANY MEANS, ELECTRONIC OR MECHANICAL, INCLUDING PHOTOCOPYING, RECORDING, OR BY ANY INFORMATION STORAGE AND RETRIEVAL SYSTEMS. PERMISSIONS TO REPRODUCE THIS DRAWING AND SPECIFICATIONS ARE GRANTED FOR COMPLETION OF ORDER.									
1. INTERPRET SYMBOLS PER ANSI Y14.5M-1982. 2. UNLESS OTHERWISE SPECIFIED, DIMENSIONS ARE IN INCHES. 3. DIMENSIONS IN PARENTHESES ARE FOR REFERENCE ONLY. 4. DIMENSIONAL TOLERANCES APPLY AFTER PLATING. 5. EACH OR STAMP DRAWING NUMBER & REVISION LEVEL ON SURFACE WITH SYMBOL: [MARK] IF APPLICABLE. 6. SURFACE FINISHES 129 UNLESS OTHERWISE NOTED.									

DECIMALS	INCH	MILLIMETER
.XX	±.005	±.25
.XXX	±.0025	±.13
.XXXX	±.001	±.025
.XXXXX	±.0005	±.013
.XXXXXX	±.00025	±.006
.XXXXXX	±.0001	±.003

DM&E CORPORATION	DM&E CORPORATION
120 SERIES CUTTER	800-053-D
120 SERIES CUTTER	800-053-D